

Ferran Sor (1778-1839)

**IL TELEMACO
NELL'ISOLA DI CALIPSO**

Òpera per a dos sopranos,
tenor, baríton i orquestra

Partitura general

Arranjat per
Joan Lluís Moraleda

Il Telemaco nell'isola di Calipso

de Ferran Sor

© Joan Lluís Moraleda

© Drets cedits a: DINSIC Publicacions Musicals, S.L.

Santa Anna 10, Entl. 3a - 08002 Barcelona

www.dinsic.com - e-mail: dinsic@dinsic.com

Maquetació: DINSIC GRÀFIC

1a edició: maig 2016

Imprès a Service Point

Pau Casals, 161-163

08820 El Prat de Llobregat (Barcelona)

Dipòsit legal: B 9958-2016

ISMN: 979-0-69231-731-9

La reproducció total o parcial d'aquesta obra per qualsevol procediment, com-
prenent-hi la reprografia i el tractament informàtic, com també la distribució
d'exemplars mitjançant lloguer i préstec, resten rigorosament prohibides sense
l'autorització escrita de l'editor o entitat autoritzada, i estaran sotmeses a les
sancions establertes per la llei.

Material de lloguer (partitura general i partitells):

DINSIC Distribucions Musicals, S.L.

Santa Anna 10 Entl. 3a - 08002

tel. 00 93 318 06 05

www.dinsic.com - e-mail: dinsic@dinsic.com

Il Telemaco nell'isola di Calipso

Preludio

Ferran Sor

00001 **ANDANTE LARGO**

00002

FAGOTTO

CORNO1

CORNO2

VIOLINO1

VIOLINO2

VIOLA

BASSI

Ucl.

OBOE1
OBOE2
FAGOTTO
CORNO1
CORNO2
VIOLINO1
VIOLINO2
VIOLA
BASSI

ALLEGRO 12

Tutti **Pizz.**

2 – Aria di Calipso (Introduzione)

“Care selve...”

(Clarinet escrit originalment en Do i en clau de Do en 4a. Part també transcrita per al Oboè 1r.

LARGO NON TANTO

Musical score for the introduction of the Calypso Aria, marked **LARGO NON TANTO**. The score includes parts for Clarinet, Horns, Bassoon, Calypso, Violins, Viola, and Basses.

CLARINET (In C): The part begins with a whole note G4, followed by a half rest, and then a whole note G4. A dynamic marking of *p* is present.

CORNO1Eb and **CORNO2Eb**: Both parts begin with a whole note G3, followed by a half rest, and then a whole note G3. A dynamic marking of *p* is present.

FAGOTTO: The part begins with a whole note G2, followed by a half rest, and then a whole note G2. A dynamic marking of *p* is present.

CALIPSO: The part is a whole rest for the first four measures.

VIOLINI1 and **VIOLINI2**: Both parts begin with a whole note G3, followed by a half rest, and then a whole note G3. A dynamic marking of *p* is present.

VIOLA: The part begins with a whole note G3, followed by a half rest, and then a whole note G3. A dynamic marking of *p* is present.

BASSI: The part begins with a whole note G2, followed by a half rest, and then a whole note G2. A dynamic marking of *p* is present.

3 – Aria di Calipso

(“Non temo il fasto insano...
Al mio volver sobrano”)

LARGO

OBOE1

OBOE2

CORNO1° in D

CORNO2° in D

CALIPSO

NON TE- MO IL FAS- TO IN- SA NO. NON CU- RO UN FO- LLE OR-

VIOLINO1

VIOLINO2

VIOLA

BASSI

4 – Aria d'Eucaris: "Più tranquilla..."

ANDANTE SOSTENUTO

Musical score for the Aria d'Eucaris, "Più tranquilla..." section, marked ANDANTE SOSTENUTO.

INSTRUMENTS: OBOE1, OBOE2, CORNI in D, EUCASTA, VIOLINS1, VIOLINS2, VIOLA, BASSI.

Key Signature: Two sharps (F# and C#).

Time Signature: 6/8.

Tempo: ANDANTE SOSTENUTO.

Lyrics: PIU TRAN-

Handwritten annotations: *violon.* and *(tutti)* are present at the bottom of the score.

5 – Recitativo

LARGO

OBOE1
OBOE2 *mf*
CORNO1Eb *mf*
CORNO2Eb *mf*
FAGOTTO *mf*
CALIPSO *mf*
VIOLINI1 1) **LARGO**
VIOLINI2 *f*
VIOLA *f*
BASSI *f*

1) originale SLURS

6 – Aria di Calipso

“Coraggio, oh Dio”

ALLEGRO

OBOE1

OBOE2

FAGGOTTO

CORNI

CALIPSO

CO- RAG- GIO, OH DI- O, SI MO- RO PA- VEN- TO I RAI DEL GIOR- NO

VIOLINS1

VIOLINS2

VIOLA

BASSI

7 – Cavatina di Mentor

“Mia dolce speranza...”

ANDANTINO

OBOE 1^o



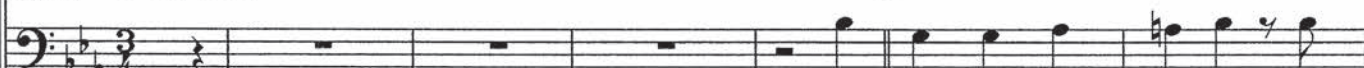
OBOE 2



CORNET



MENTOR (MENTOR)



MIA DOL- CE SPE- RAN- ZA, RI-

VIOLINS1



VIOLINS2



VIOLA



BASSI



Calipso - Telemaco

MODERATO

CALIPSO

TELEMACO

TE- LE-MA- CO MIO CO-RE, NON TI STA- CAR DI ME.

BASSI

L'OB-BLI-GO MI- O OR M'IN-DU- CE A PAR- TIR, CA-

CALIPSO

TELEMACO

FER-MA IL PIE, NON FUG- GIR, E QUES- TO IL PRE- MIO, DELL' A- MOR CHE NEL

BASSI

LIP- SO, AD- DI- O.

CALIPSO

TELEMACO

SENO, SEN- TE PER TE CA- LIP- SO.

BASSI

NON M'A- FFLI- GGE- RE DI PIU, DA- MI LA

CALIPSO

TELEMACO

MOR- TE, PER- CHE TAN- TO RI- GOR BAR- BA- RA SOR- TE. !

BASSI

9 – Duetto: Calipso - Telemaco

("Deh ti consola...")

ANDANTE ANDANTE ALLEGRO

OBOE1
OBOE2
CORNI
CALIPSO
TELEMACO
VIOLINS1
VIOLINS2
VIOLA
BASSI

DEH TI CON-SO-LA, DEH TI CON-SO-LA OH

10 – Recitativo ed aria di mentore:

“Qual terra e... Figlio, oh Dio!”

ANDANTE TRANQUILLO

Musical score for the section "ANDANTE TRANQUILLO". The score is written for the following instruments:

- OBOE1**: Treble clef, 4/4 time signature. Dynamics: *fp*, *fp*, *f*.
- OBOE2**: Treble clef, 4/4 time signature. Dynamics: *fp*, *fp*, *f*.
- CORNI Eb**: Treble clef, 4/4 time signature. Dynamics: *fp*, *fp*, *fp*. Includes a key signature change to E-flat major.
- FAGOTTO**: Bass clef, 4/4 time signature. Dynamics: *fp*, *fp*, *fp*.
- MENTONE**: Bass clef, 4/4 time signature. Dynamics: *fp*, *fp*, *fp*.
- VIOLINI1**: Treble clef, 4/4 time signature. Dynamics: *fp*, *fp*, *f*.
- VIOLINI2**: Treble clef, 4/4 time signature. Dynamics: *fp*, *fp*, *f*.
- VIOLA**: Bass clef, 4/4 time signature. Dynamics: *fp*, *fp*, *sf*.
- BASSI**: Bass clef, 4/4 time signature. Dynamics: *fp*, *fp*, *fp*.

The score is in 4/4 time and features a key signature change from B-flat major to E-flat major. The tempo is marked "ANDANTE TRANQUILLO".

11 – Duetto: Calipso - Telemaco:

“Veggio uscire da quella tomba...”

ANDANTE

OBOE1

OBOE2

CORNI Bb

Corni in Bb Basso

CALIPSO

TELEMACO

VIOLINS1

VIOLINS2

VIOLA

BASSI

Fotocopiar les partitures sense l'autorització de l'editor és il·legal • MO30 •

OBOE1

OBOE2

CORNI In B Basso

CALIPSO

EUCASTA

TELEMACO

MENTONE

VIOLINS1

VIOLINS2

VIOLA

BASSI

Fagot

OBOE1

OBOE2

CORNI

CALIPSO

EUCASTA

TELEMACHO

MENTONE

VIOLINS1

VIOLINS2

VIOLA

BASSI

Col. B.

PAR- TI, PAR- TI DA