

# *Moments musicals 2*

*Per a piano*

*Tomàs Simón Plazas*

## Agraïments:

Raul Ventura: mescla i masterització del disc compacte  
Lluís Ràfales: pianista intèrpret a la presentació del llibre

## Moments musicals 2 per a piano

Partitura amb CD

1a edició: juny 2021

© Tomàs Simón Plazas

© DINSIC Publicacions Musicals, S.L.

Magatzem: Sepúlveda, 84 - 08015 Barcelona

Seu social:

Gran Via de les Corts Catalanes, 529

08011 Barcelona

email: [dinsic@dinsic.com](mailto:dinsic@dinsic.com) - [www.dinsic.com](http://www.dinsic.com)

Disseny coberta: Ludivuca Mosca

Maquetació: DINSIC GRÀFIC

Imprès a: Service Point

Pau Casals, 161-163

08820 El Prat de Llobregat (Barcelona)

Dipòsit legal: B 12143-2021

ISMN: 979-0-69238-969-9

La reproducció total o parcial d'aquesta obra per qualsevol procediment, compresa la reprografia i el tractament informàtic, i també la distribució d'exemplars mitjançant lloguer i préstec, resten rigorosament prohibides sense l'autorització escrita de l'editor o entitat autoritzada, i estaran sotmeses a les sancions establertes per la llei.

**Distribueix: DINSIC Distribucions Musicals, S.L.**

**Magatzem: Sepúlveda, 84 - 08015 Barcelona**

**Seu social: Gran Via de les Corts Catalanes, 529 - 08011 Barcelona**

**email: [dinsic@dinsic.com](mailto:dinsic@dinsic.com)**

**[www.dinsic.com](http://www.dinsic.com)**

*Moments musicals 2* és un conjunt de deu peces per a piano sol creades a partir de diferents fonts d'inspiració. Tot i que n'hi ha d'altres, els sentiments i la natura són alguns dels temes a partir dels quals es desenvolupa aquest recull ple d'harmonies suggerents i melodies enganxoses que, a través de la seva senzillesa, traspuen una bellesa diàfana que es tradueix en una interpretació atractiva i una escolta planera.

En totes les peces, el material temàtic es presenta de forma senzilla i evoluciona fins a obligar l'interpret a utilitzar tots els recursos al seu abast per desplegar tota l'expressivitat i romanticisme propis del piano. A més, en molts passatges la música s'impregna d'un caràcter descriptiu molt suggeridor on s'aprecia la influència de la música de cinema o els musicals en l'autor.

Tomàs Simón  
www.tomasimon.com

\*\*\*

*Moments musicals 2* es un conjunto de diez piezas para piano solo creadas a partir de diferentes fuentes de inspiración. A pesar de que hay otros, los sentimientos y la naturaleza son algunos de los temas a partir de los cuales se desarrolla esta recopilación lleno de armonías sugerentes y melodías pegadizas que, a través de su sencillez, destilan una belleza diáfana que se traduce en una interpretación atractiva y una audición sin dificultades.

En todas estas piezas, el material temático se presenta de forma sencilla y evoluciona hasta obligar al intérprete a utilizar todos los recursos a su alcance para desplegar toda la expresividad y romanticismo propios del piano. Además, en muchos pasajes la música se impregna de un carácter descriptivo muy sugerente donde se aprecia la influencia de la música de cine o los musicales de autor.

Tomàs Simón  
www.tomasimon.com

\*\*\*

*Moments Musicals 2* is a set of ten pieces for solo piano created from various sources of inspiration. Although others are present, feelings and nature are some of the themes from which this collection develops, brimming with inspiring harmonies and captivating melodies that, by way of their simplicity, exude a diaphanous beauty that translates into an appealing performance and a smooth listening experience.

In all of the pieces, the thematic material is presented in a simple way and evolves until the performer is required to use all of the resources at his disposal to unleash the full expressivity and romanticism of the piano. Furthermore, in many of the passages the music is imbued with a very intriguing descriptive character, where the influence of film music or musicals on the author can be appreciated.

Tomàs Simón  
www.tomasimon.com

# Índex

1. Neguit / Ansia / Anxiety .....	6
2. Estels / Estrellas / Stars .....	10
3. Anhel / Anheló / Longing .....	13
4. Records / Recuerdos / Memories .....	16
5. Espectres / Espectros / Ghosts .....	19
6. Delicadesa / Delicadeza / Delicateness .....	25
7. Complicitat / Complicidad / Complicity .....	30
8. Agonia / Agonía / Agony .....	34
9. Tendresa / Ternura / Tenderness .....	39
10. Joventut / Juventud / Youth .....	43

# Neguit

Inquiet ♩ = 60

The musical score for "Neguit" is written for piano and bass. It begins with a tempo marking of "Inquiet ♩ = 60". The key signature has two flats (B-flat major or D-flat minor), and the time signature is 4/4. The score is divided into five systems, each with a measure number (1, 4, 6, 8, 10) at the start of the first staff. The first system (measures 1-3) is marked *p* (piano). The second system (measures 4-5) is marked *mp* (mezzo-piano). The score features intricate sixteenth-note passages, frequently beamed in groups of six, and a consistent bass line of quarter notes. The piece ends with a final chord in the right hand and a sustained bass line.

# Estels

Lent ♩ = 50

The musical score for 'Estels' is written in 4/4 time with a tempo marking of 'Lent ♩ = 50'. The key signature has one flat (B-flat). The score is divided into five systems, each with a measure number (1, 5, 9, 13, 17) at the beginning of the first staff. The first system starts with a piano (*p*) dynamic in the bass staff and a mezzo-forte (*mp*) dynamic in the treble staff. The second system continues the piano part in the bass staff. The third system continues the piano part in the bass staff. The fourth system continues the piano part in the bass staff. The fifth system starts with a mezzo-forte (*mf*) dynamic in the treble staff and continues the piano part in the bass staff. The score features a variety of musical notations, including eighth and sixteenth notes, rests, and dynamic markings.

# Anhel

Lent ♩ = 60

The musical score for 'Anhel' is written for piano in 4/4 time, key of B-flat major. The tempo is marked 'Lento' with a quarter note equal to 60 beats per minute. The score is divided into five systems, each containing a treble and bass staff. The bass staff features a continuous triplet pattern of eighth notes. The treble staff has melodic lines with various dynamics and articulations.

**System 1 (Measures 1-3):** The bass staff begins with a triplet of eighth notes. The treble staff has a whole note rest in measure 1, followed by a half note in measure 2, and a quarter note in measure 3. The dynamic is *mp*.

**System 2 (Measures 4-6):** The bass staff continues the triplet pattern. The treble staff has a half note in measure 4, a quarter note in measure 5, and a half note in measure 6. The dynamic is *p*.

**System 3 (Measures 7-9):** The bass staff continues the triplet pattern. The treble staff has a half note in measure 7, a quarter note in measure 8, and a half note in measure 9. The dynamic is *mf*.

**System 4 (Measures 10-12):** The bass staff continues the triplet pattern. The treble staff has a half note in measure 10, a quarter note in measure 11, and a half note in measure 12. The dynamic is *mf*.

**System 5 (Measures 13-15):** The bass staff continues the triplet pattern. The treble staff has a half note in measure 13, a quarter note in measure 14, and a half note in measure 15. The dynamic is *mf*.

# Records

**Lent** ♩ = 80

*p*

6

11

16

*mp*

21



# Espectres

Misteriós ♩ = 60

*mf*

3

5

7

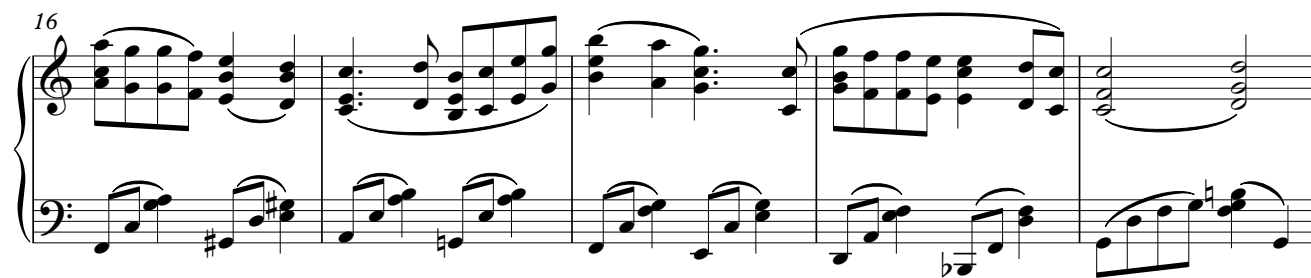
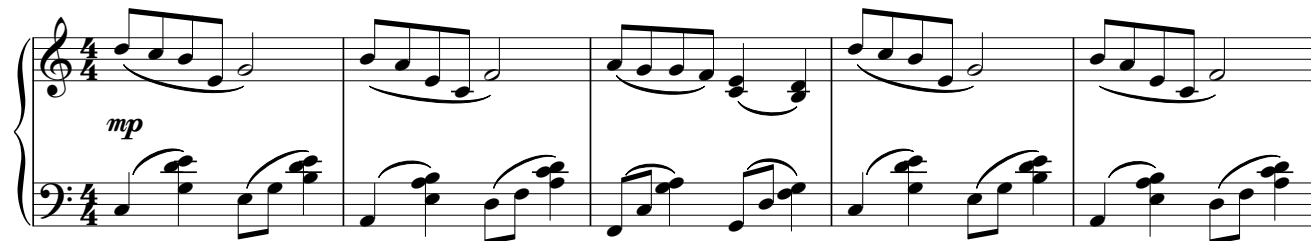
8va

9

8va

# Delicadesa

Lent ♩ = 60



# Complicitat

Moderat ♩ = 80

*p*

5

9

13

*mp*

17

# Agonia

Pesant ♩ = 60

The musical score for "Agonia" is written in 4/4 time with a tempo of 60 beats per minute. It is in the key of D major, indicated by two sharps (F# and C#). The score is divided into five systems, each with a measure number (1, 6, 10, 14, 18) at the beginning of the first staff.

- System 1 (Measures 1-5):** The piano part (treble clef) begins with a whole rest in measure 1, followed by a series of eighth-note chords. The bass part (bass clef) plays a steady eighth-note accompaniment. Dynamics include *mf* (measures 2-4) and *mp* (measure 5).
- System 2 (Measures 6-9):** Continues the eighth-note accompaniment in the bass. The piano part features more complex chordal textures.
- System 3 (Measures 10-13):** Similar to the previous systems, maintaining the eighth-note bass line and piano accompaniment.
- System 4 (Measures 14-17):** Continues the musical progression with consistent rhythmic patterns.
- System 5 (Measures 18-21):** The final system on the page, featuring triplets in both the piano and bass parts, indicated by a '3' and a bracket under the notes.

# Tendresa

Tendre ♩ = 70

*mp*

Measures 1-4 of the piece. The music is in 4/4 time, key of B-flat major. The melody is in the right hand, starting with a half rest, then a quarter note B-flat, followed by eighth notes. The bass line is in the left hand, starting with a half note B-flat, followed by eighth notes. The dynamic is mezzo-piano (mp).

5

Measures 5-7. Measure 5 continues the melody and bass line. Measure 6 has a repeat sign in the right hand. Measure 7 has a repeat sign in the right hand and a key signature change to A-flat major (B-flat major with two flats).

8

Measures 8-10. Measure 8 continues the melody and bass line. Measure 9 has a repeat sign in the right hand. Measure 10 has a repeat sign in the right hand and a key signature change to G major (B-flat major with one flat).

11

Measures 11-13. Measure 11 continues the melody and bass line. Measure 12 has a repeat sign in the right hand. Measure 13 has a repeat sign in the right hand and a key signature change to F major (B-flat major with no flats).

# Joventut

Moderat ♩ = 68

*mp*

7

12

*mf*

17

21